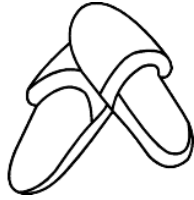


# Letter S s

Circle the word that is spelled correctly.

slippers  
slipperz  
slippirs



stul  
stole  
stool



shue  
shoo  
shoe



seal  
seel  
sel



seeshel  
seashell  
seachell



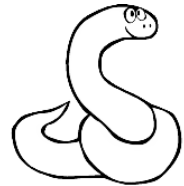
scale  
skale  
scael



straberry  
strawberrie  
strawberry



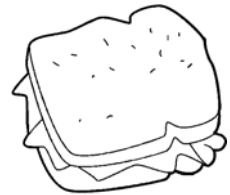
snak  
snake  
snaek



shert  
shrte  
shirt



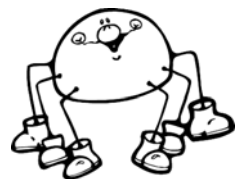
samwich  
sandwitch  
sandwich



sqwrl  
squirrel  
sqwral



spider  
spidar  
spyder



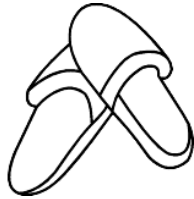
# Letter S s

Circle the word that is spelled correctly.

slippers

slipperz

slippirs



stul

stole

stool



shue

shoo

shoe



seal

seel

sel



seeshel

seashell

seachell



scale

skale

scael



straberry

strawberrie

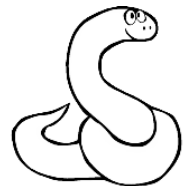
strawberry



snak

snake

snaek



shert

shrte

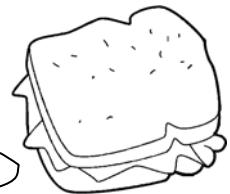
shirt



samwich

sandwitch

sandwich



sqwrl

squirrel

sqwral



spider

spidar

spyder

